

Optech microscopes

Routine Lab Applications



Optech microscopes

Biostar BM 45



BM45

Biological microscope for routine labs and high-level didactic training.

- Metal frame stand.
- Binocular or Trinocular head.
- Wide Field eyepieces WF 10x (20).
- 5-places nosepiece revolver, with ICS plan-achromatic parfocal objectives.
- Specimen stage 216 x 150 mm, with scan-area 78 (X) - 54 (Y) and surface anti-scratch treatment.
- Abbe condenser NA 1.25, with aperture diaphragm.
- Turret universal condenser, only in Ph configuration.
- S Led lighting system, with electronic light intensity adjustment.

Standard equipment:

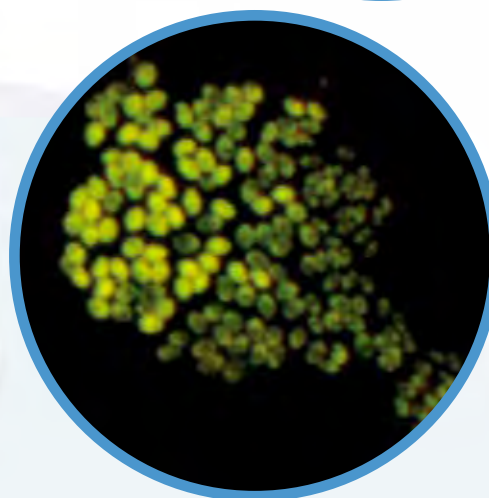
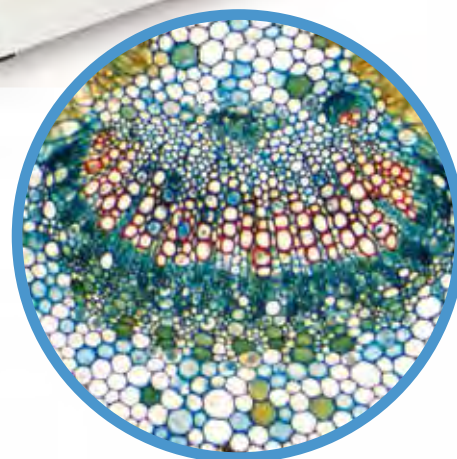
- Immersion oil bottle, ND 1.515.
- Centering telescopic eyepiece, only in Ph configuration.
- Dust cover.
- Instruction manual.

Optional accessories:

- Additional optics.
- Phase contrast device.
- Dark field condenser.
- Polarization device.
- Led epifluorescence device
- HBO epifluorescence device.
- Kohler lighting system.
- C-mount TV adapters.
- Photo-micrography adapters.
- Digital videocameras.



BM45 + LED Epi-device



CODE	MODELS	BRIGHT FIELD OBJECTIVES
K71164	BM 45 Binocular	PA 4x / 0,10 - PA 10x / 0,25 - PA 40x / 0,65 - PA 100x / 1,25
K71563	BM 45 Trinocular	PA 4x / 0,10 - PA 10x / 0,25 - PA 40x / 0,65 - PA 100x / 1,25
CODE	MODELS	PHASE CONTRAST OBJECTIVES
K71644	BM 45 Trinocular Ph	PA 10x / 0,25 - PA 40x / 0,65

Optech microscopes

Biostar B6



Biological microscope for routine lab analysis and high-level didactic training.

- Metal frame stand.
- Binocular or Trinocular head.
- Wide Field eyepieces WF 10x (20).
- 5-places nosepiece revolver, with ICS plan-achromatic parfocal objectives.
- Specimen stage 180 x 150 mm, with scan-area 75 (X) - 50 (Y) and surface anti-scratch treatment.
- Kohler lighting system.
- S Led lighting system, with electronic light intensity adjustment.

Standard equipment:

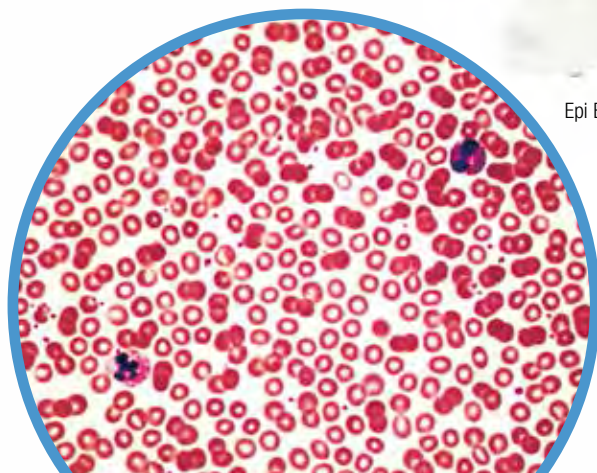
- Immersion oil bottle, ND 1.515.
- Dust cover.
- Instruction manual.

Optional accessories:

- Additional optics.
- Phase contrast device.
- Dark field condenser.
- Polarization device.
- Led epifluorescence device.
- HBO epifluorescence device.
- Epi Bright Field lighting system for incident light.
- C-mount TV adapters.
- Photo-micrography adapters.
- Digital videocameras.



Epi Bright Field lighting system for incident light



CODE	MODELS	OBJECTIVES
K71473	B6 Binocular	PA 4x / 0,10 - PA 10x / 0,25 - PA 40x / 0,65 - PA 100x / 1,25
K71474	B6 Trinocular	PA 4x / 0,10 - PA 10x / 0,25 - PA 40x / 0,65 - PA 100x / 1,25

Optech microscopes

Biostar BM 60



BM60

Biological microscope for routine and precise laboratory analysis.

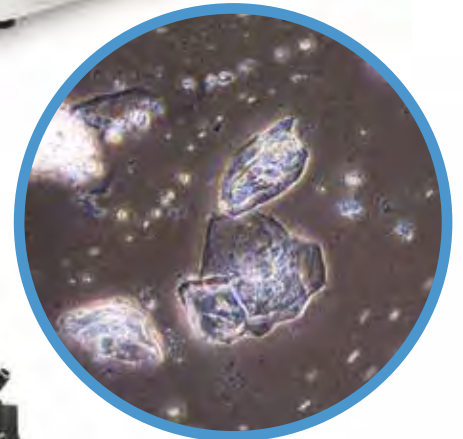
- Metal frame stand.
- Trinocular head.
- Wide Field eyepieces PL 10x (22) FT, focusable, with graticule's insert.
- 5-places nosepiece revolver, with ICS plan-achromatic parfocal objectives.
- Specimen stage 150 x 140 mm, with scan-area 75 (X) - 50 (Y).
- Abbe condenser NA 1.25, with aperture diaphragm.
- Turret universal condenser, only in Ph configuration.
- Kohler lighting system.
- S Led lighting system, with electronic light intensity adjustment.

Standard equipment:

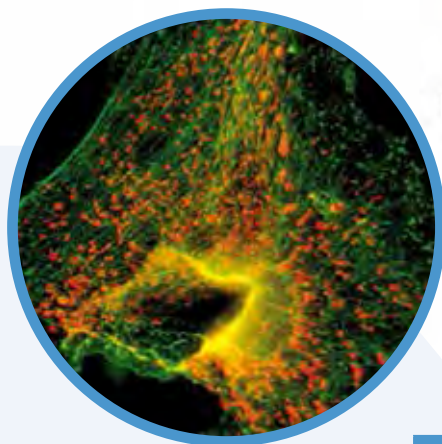
- Immersion oil bottle, ND 1.515.
- Centering telescopic eyepiece, only in Ph configuration.
- Dust cover.
- Instruction manual.

Optional accessories:

- Additional optics.
- Phase contrast device.
- Dark field condenser.
- Polarization device.
- Led epifluorescence device.
- HBO epifluorescence device.
- C-mount TV adapters.
- Photo-micrography adapters.
- Digital videocameras.



BM60 + HBO Epi-device



CODE	MODELS	BRIGHT FIELD OBJECTIVES
K71569	BM 60 Trinocular	PA 4x / 0,10 - PA 10x / 0,25 - PA 40x / 0,65 - PA 100x / 1,25

CODE	MODELS	PHASE CONTRAST OBJECTIVES
K71202	BM 60 Ph Trinocular	PA 10x / 0,25 - PA 20x / 0,40 - PA 40x / 0,65 - PA 100x / 1,25
K71341	BM 60 Ph 2 Trinocular	PA 10x / 0,25 - PA 40x / 0,65

Optech microscopes

Biostar BM 60 As



Biological microscope for routine and precise laboratory analysis. Special configuration for asbestos counting & analysis (MOCF).

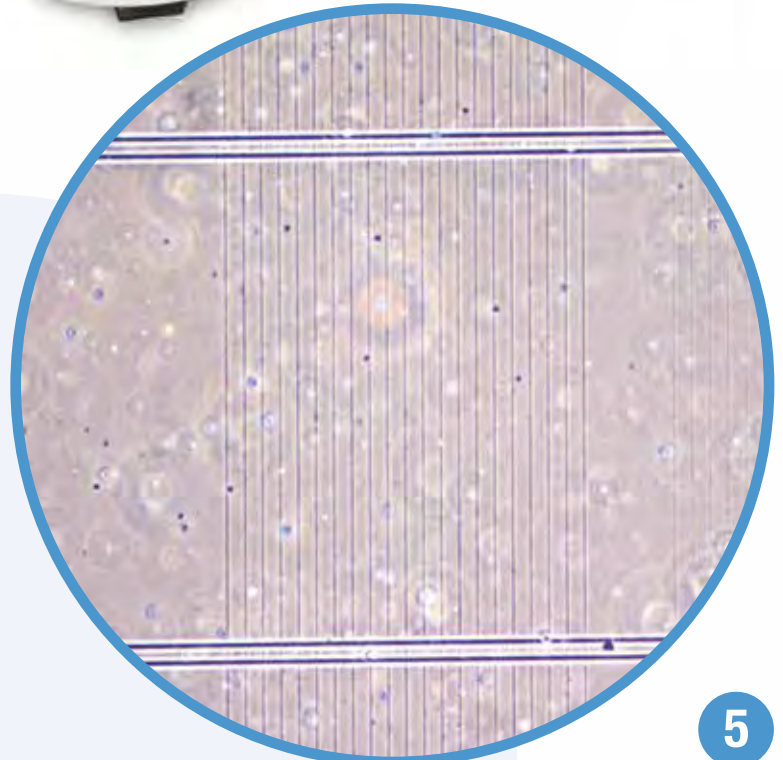
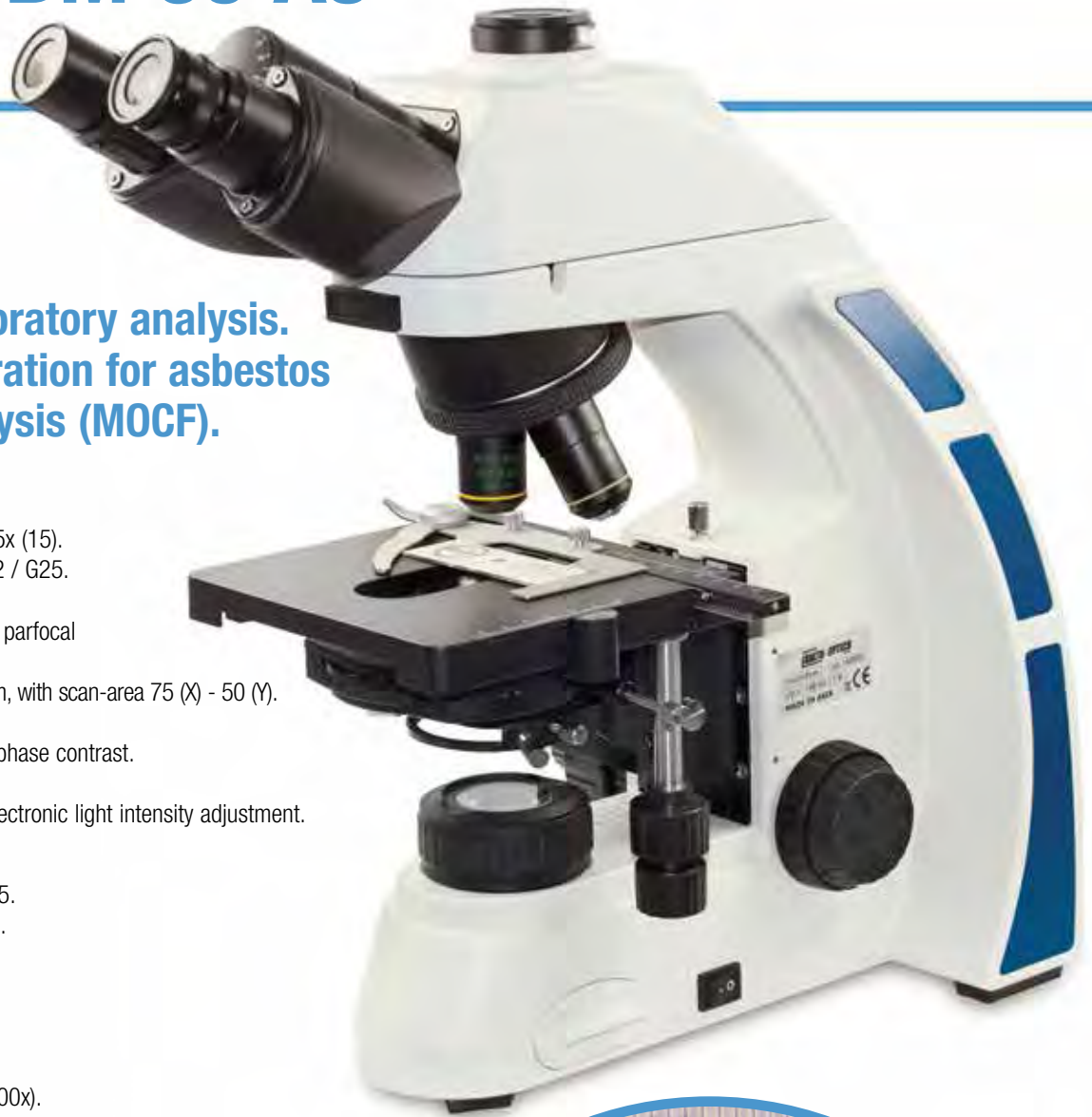
- Metal frame stand.
- Trinocular head.
- Wide Field eyepieces WF 12.5x (15).
- Walton & Beckett reticule G22 / G25.
- 5-places nosepiece revolver, with two ICS plan-achromatic parfocal objectives for phase contrast.
- Specimen stage 150 x 140 mm, with scan-area 75 (X) - 50 (Y).
- Abbe condenser NA 1.25, for bright & darkfield and for phase contrast.
- Kohler lighting system.
- S Led lighting system, with electronic light intensity adjustment.

Standard equipment:

- Immersion oil bottle, ND 1.515.
- Centering telescopic eyepiece.
- Dust cover.
- Instruction manual.

Optional accessories:

- Additional optics.
- Phase contrast device (20x-100x).
- Immersion dark field condenser.
- Polarization device.
- Led epifluorescence device.
- HBO epifluorescence device.
- Test specimen HSE/NPL MKIII.
- Cargille liquids, known I.R.
- C-mount TV adapters.
- Photo-micrography adapters.
- Digital videocameras.



MODEL	OBJECTIVES
BM 60 As	PA 10x / 0,25 Ph - PA 40x / 0,65 Ph

Optech inverted microscopes

Biostar IB



Biological inverted microscope, for routine laboratory and didactic.

- Metal frame stand.
- Trinocular head.
- Wide Field eyepieces WF 10x (20).
- 5-places nosepiece revolver, with plan-achromatic parfocal objectives 160 mm, for phase contrast.
- Specimen stage 220 x 210 mm, with specimen guide and scan-area 120 (X) - 82 (Y).
- Long working-distance condenser NA 0.5, with insert and slides for phase contrast device.
- 6V-30W halogen lamp lighting system, with electronic light intensity adjustment.

Standard equipment:

- Inserts for: Petri dishes, specimen glass 26 x 76 mm and wells plates.
- Conversion and contrast filters.
- Dust cover.
- Instruction manual.

Optional accessories:

- Additional optics.
- C-mount TV adapters.
- Photo-micrography adapters.
- Digital videocameras.



CODE	MODEL	OBJECTIVES
K71700ph	IB Trinocular	PA 10x / 0,25 Ph - PA 25x / 0,40 Ph - PA 40x / 0,65 Ph

Optech inverted microscopes

Biostar IB 4



Inverted biological microscope, for a complete routine in your laboratory.

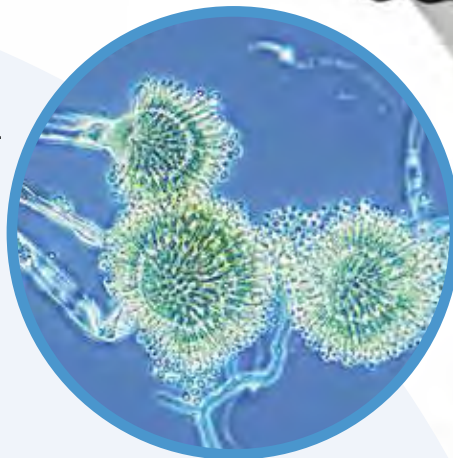
- Metal frame stand.
- Trinocular head, 45° inclined.
- Central photo-port for a comfortable and stable photo/video connection.
- Wide Field eyepieces WF 10x (20) FT, focusable, with graticule's insert.
- 5-places nosepiece revolver, with ICS plan-achromatic parfocal objectives for phase contrast.
- Specimen stage 170 x 250 mm.
- Specimen's guide with scan-area 121(X) - 80 (Y), for model IB 4.40.
- Long working-distance condenser NA 0.3, with insert and slides for phase contrast device.
- 6V-30W halogen lamp lighting system, with electronic light intensity adjustment

Standard equipment:

- Centering telescopic eyepiece for phase contrast device.
- Inserts for: Petri dishes, specimen glass 26 x 76 mm and wells plates, for model IB 4.40.
- Conversion and contrast filters.
- Dust cover.
- Instruction manual.

Optional accessories:

- Additional optics.
- HBO epifluorescence device.
- C-mount TV adapters.
- Photo-micrography adapters.
- Digital videocameras.



IB 4.40



IB 4.20

CODE	MODELS	PHASE CONTRAST OBJECTIVES
K71204	IB 4.20 Trinocular	PA 4x / 0,10 - PA 10x / 0,25 Ph - PA 20x / 0,40 Ph
K71554	IB 4.40 Trinocular	PA 4x / 0,10 - PA 10x / 0,25 Ph - PA 20x / 0,40 Ph - PA 40x / 0,55 Ph.

Optech Stereomicroscopes SL N series



Stereomicroscope with Greenough optical system, for routine lab analysis and high-level didactic training.

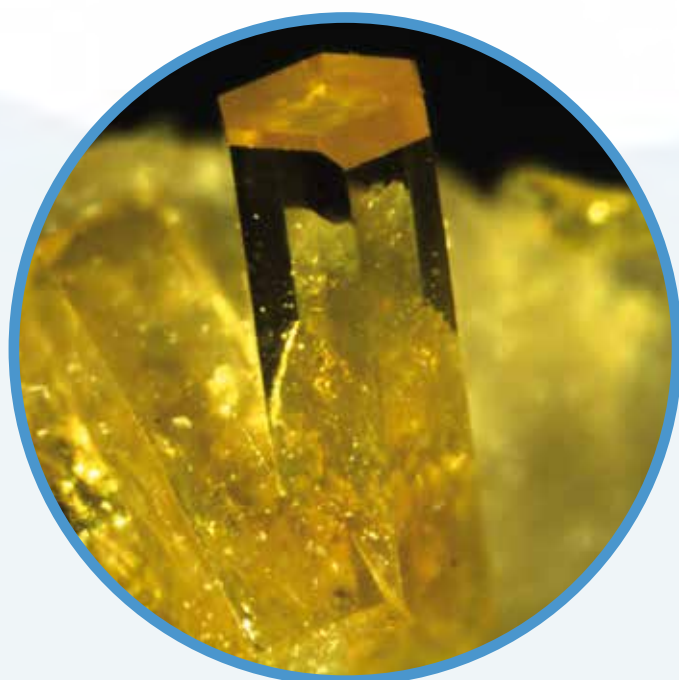
- Metal frame stand.
- Binocular or Trinocular head, 45° inclined.
- Interpupillary distance adjustment: 55...75 mm.
- Wide Field eyepieces WF 10x (22) with +/- 5 mm dioptic compensation.
- Zoom optical system F = 9:1.
- Min-Max possible magnifications: 3.5x...315x.
- Standard magnifications: 7x...63x.
- Working distance: 110 mm.
- Focussing systems: macrometric or macro-micrometric.
- Led lighting system, for both incident and transmitted light, with electronic light intensity adjustment.

Accessori a corredo:

- Dust cover.
- Instruction manual.

Optional accessories:

- Additional optics.
- Stands for large-dimensions samples.
- Ring light and grazing light systems.
- Dimensional measures.
- C-mount TV adapters.
- Photo-micrography adapters.
- Digital videocameras.



CODE	MODEL	DIMENSIONS mm (L x W x H)
K71585	Binocular SL N	280 x 310 x 440
K71122	Trinocular SL NT	280 x 310 x 440

Optech Stereomicroscopes

GZ 808 series



Stereomicroscope with Greenough optical system, for complete routine & research lab analysis.

- Metal frame stand & high column.
- Binocular head, 20° inclined.
- Interpupillary distance adjustment: 55...75 mm.
- Wide Field eyepieces EW 10x (22) with +/- 5 mm dioptic compensation.
- Zoom optical system F = 8:1.
- Click-stops for dimensional analysis.
- Min-Max possible magnifications: 2.4x...384x.
- Standard magnifications: 8x... 64x.
- Working distance: 80 mm.
- Focussing systems: macrometric or macro-micrometric.
- Led lighting system, for both incident and transmitted light, with electronic light intensity adjustment.

Standard equipment: Optional accessories:

- Dust cover.
- Instruction manual.
- Tilting ergonomic binocular head.
- Additional optics.
- Intermediate photo/video modules.
- HBO epifluorescence.
- Episcopic lighting system.
- Drawing tube.
- Stands for large-dimensions samples.
- Ring light and grazing light systems.
- Dimensional measures.
- C-mount TV adapters.
- Photo-micrography adapters.
- Digital videocameras.



CODE	MODEL	DIMENSIONS mm (L x W x H)
K71589	Binocular GZ 808	330 x 280 x 450

Optech Stereomicroscopes

Independent lighting systems



Ring light with fluorescent lamp.



CODE	FEATURES
K71631	Inner diameter: 62 mm - 220V - 7W

Led ring light with adjustable light intensity.



CODE	FEATURES
K71632	Inner diameter: 61 mm - N. 48 Leds

Sectoral Led ring light with adjustable light intensity.



CODE	FEATURES
F719959	Inner diameter: 61 mm - N.144 Leds

Cold light source model PL2000, with 2-arm optical fibre light guide.



CODE	FEATURES
B7865	Diameter of active fibre beam: 3 mm

Led lighting system, for transmitted light.



CODE	FEATURES
K71633	Ring diameter: 95 mm Thickness: 4.5 mm - Adjustable light intensity

Led spot lighting system, with 2-arm semi-rigid light guide.



CODE	FEATURES
K71630	Light guide length: 48 cm Adjustable and independent light intensity

Microscope digital videocameras

Visiocam AS - IS - ISHD series



**Digital videocameras,
easy-to-use and suitable
to any kind of observation.**

- Resolutions: 1.3 - 3.0 - 5.0 - 10.0 MPixels.
- Sensors: C MOS - CCD.
- Good definition and reliability for colour return.
- PC connection through USB cable.
- Equipped with software for monitoring, acquisition and basic image analysis.
- C-mount Tv adapters (on request).

Digital videocameras *Visiocam AS series



CODE	VISIOCAM AS	MEGAPIXELS	RESOLUTION	SENSOR	FRAME/SEC.	DINAMIC RANGE	SOFTWARE
K71655	AS C 560	5.6	2720 x 2048	CCD 1/2"	10	75 db	F Scope
K71643	AS M 510	5.0	2592 x 1944	CMOS 1/2.2"	7	67 db	F Scope

Digital videocameras Visiocam IS series



CODE	VISIOCAM IS	MEGAPIXELS	RESOLUTION	SENSOR	FRAME/SEC.	DINAMIC RANGE	SOFTWARE
K71637	IS DV 5000	5.0	2592 x 1944	CMOS 1/2.5"	5	60 db	IS Capture
K71647	IS DV 10000	10.0	3664 x 2748	CMOS 1/2.3"	3	56 db	IS Capture

Digital videocameras *Visiocam ISHD series

- No "wake effect", thanks to an high Fps value.
- Micro SD card included, for direct image storage.



CODE	VISIOCAM ISHD	MEGAPIXELS	RESOLUTION	OUTLETS	FRAME/SEC.	SOFTWARE
K71638	IS DV 6000 HD	6.0	3264 x 1836	HDMI - USB 2 - micro SD	60	IS Capture

Delta Pix (DK) professional modular software INSIGHT

SOFTWARE MODULE	ADVANCED FUNCTIONS	OPERATION
INSIGHT BASIC	Reports - Dimensional measures	USB hardware key
INSIGHT EE EF	Focussing extension (focal level recomposition)	USB hardware key

Optional accessories, for all models:

- C-mount TV adapter.
- Micrometers for software calibration.
- *INSIGHT additional software modules (only for Visiocam AS and ISHD Series).

